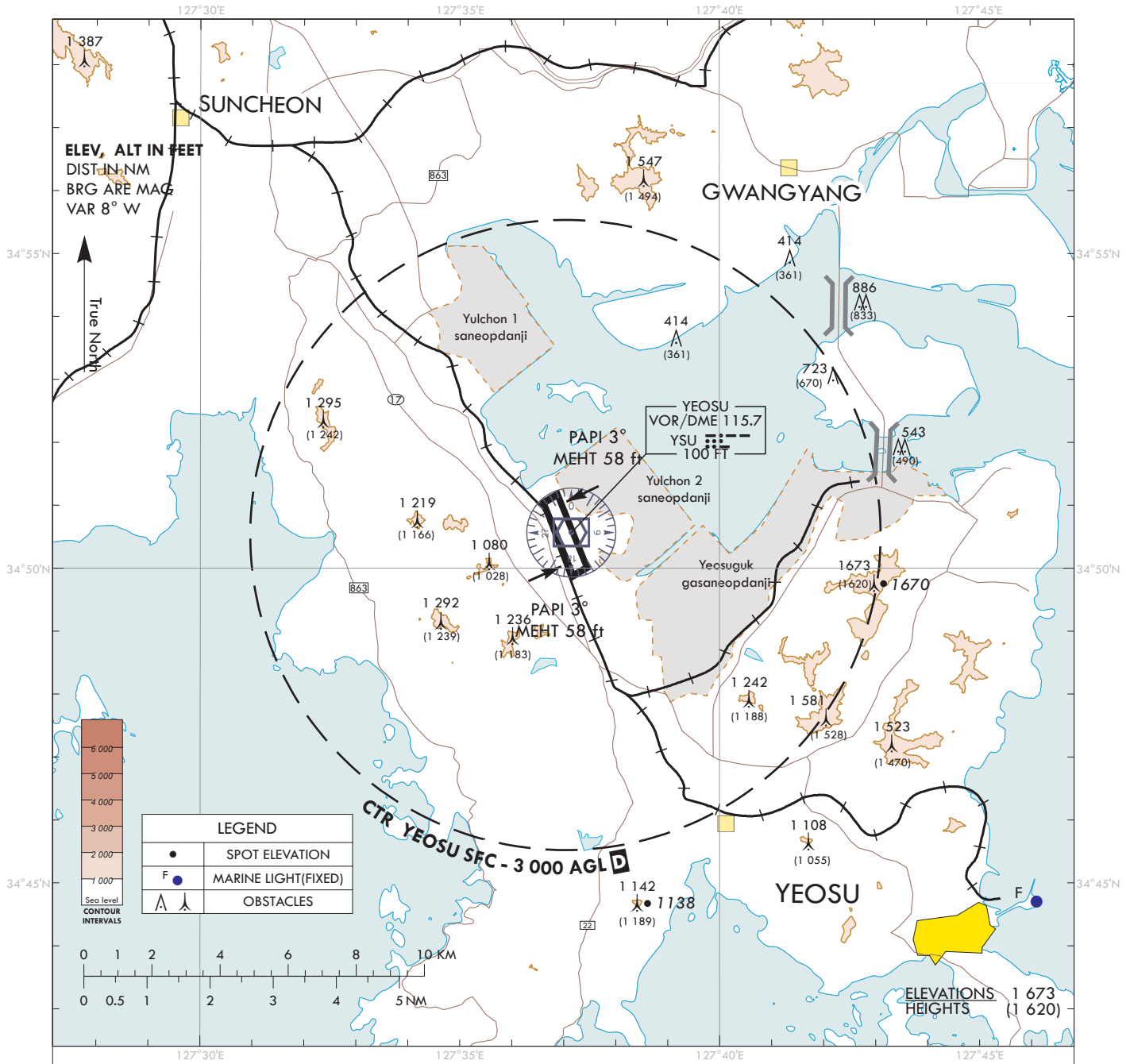


**VISUAL  
APPROACH  
CHART - ICAO**

AD ELEV 53 ft  
HEIGHTS RELATED  
TO AD ELEV

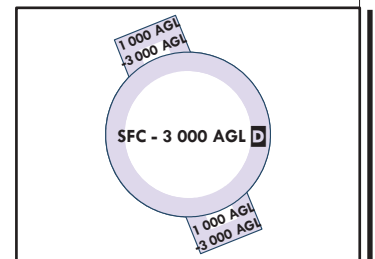
SACHEON	APP	135.4
YEOSU	TWR	122.5
		240.9

**YEOSU/Yeosu**



**VISUAL APPROACH PROCEDURE**

1. Visual approach may be initiated by ATC or approved upon pilot request on traffic permitting basis when :
  - a. Ceiling : At or above 500 ft plus MVA
  - b. Visibility : Not less than 3 SM
  
2. ATS airspace : Class D(Refer to ENR 2.1-9)



Change : Information of diagram of airspace classifications.